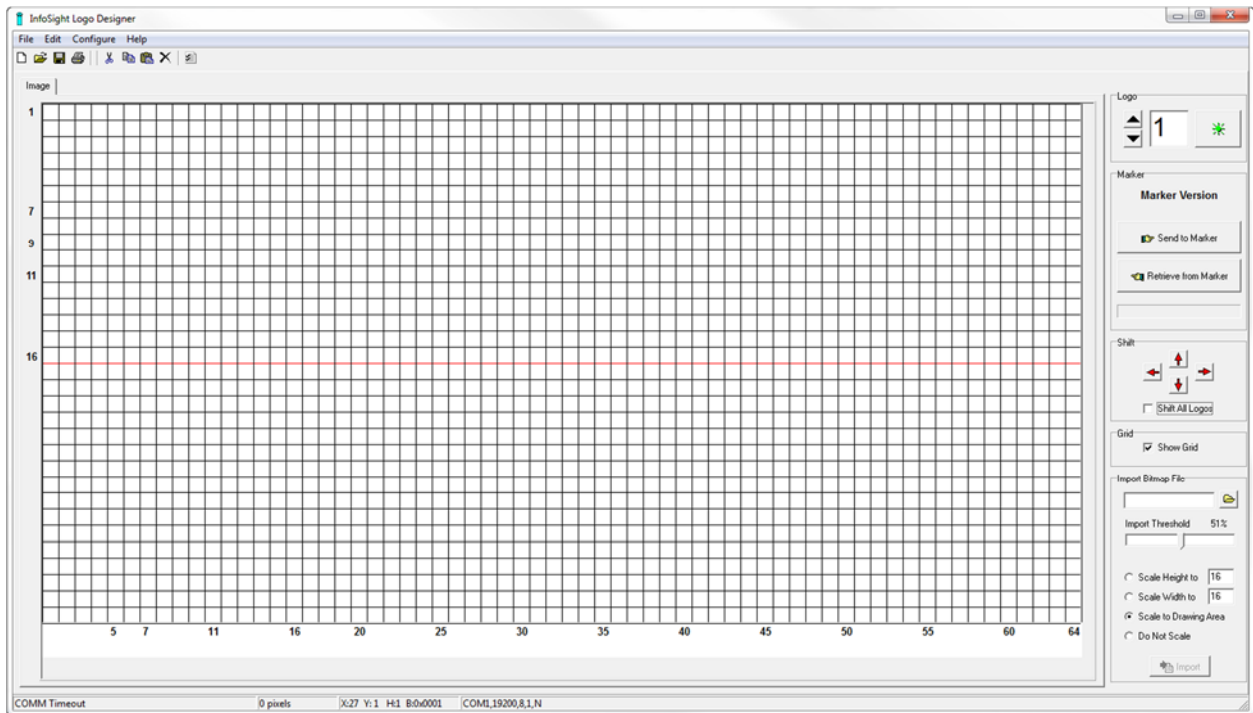




Logo Designer

Software Reference Manual



Revision -
19 November 2015

INFOSIGHT CORPORATION
20700 U.S. HWY 23
P.O. Box 5000
Chillicothe, Ohio 45601 USA
+1 (740) 642-3600 Tel. (M-F 8am-5pm US Eastern Time Zone)
+1 (740) 642-4666 Emergency Service (outside normal business hours)
+1 (740) 642-5001 Fax

www.infosight.com

Copyright © 2015 InfoSight Corporation All Rights Reserved
InfoSight ® is a registered trademark of InfoSight Corporation

Copyright Notice

Copyright© 2015 INFOSIGHT CORPORATION

All rights reserved, Printed in U.S.A.

First Printing: August 2014

INFOSIGHT CORPORATION reserves the right to make changes in specifications and other information contained in this manual without prior notice, and the reader should consult INFOSIGHT CORPORATION to determine whether any such changes have been made.

In no event shall INFOSIGHT CORPORATION be liable for any incidental, indirect, special, or consequential damages whatsoever (including but not limited to lost profits) arising out of, or relating to this manual or the information contained in it, even if INFOSIGHT CORPORATION has been advised, knew, or should have known of the possibility of such damages.

INFOSIGHT CORPORATION expressly warrants the equipment manufactured by it as set forth in the Standard Terms and Conditions of Sale. INFOSIGHT CORPORATION makes no other warranties, either expressed or implied (including without limitation warranties as to merchantability or fitness for a particular purpose).

Windows® is a registered trademark of Microsoft Corporation.

Logo Designer

Software/Firmware License Agreement

IMPORTANT: THE SUBJECT PROGRAMS ARE LICENSED BY INFOSIGHT CORPORATION TO END-USERS FOR THEIR USE ONLY ON THE TERMS BELOW. ACCEPTING AND USING THESE PROGRAMS INDICATES YOUR ACCEPTANCE OF THESE TERMS. THIS IS A LEGAL AGREEMENT BETWEEN YOU, THE END USER, AND INFOSIGHT CORPORATION.

1) GRANT OF LICENSE. InfoSight Corporation ("InfoSight") agrees to grant to you a non-exclusive license to use the InfoSight software program (the "PROGRAM") subject to the terms and conditions of this license agreement.

2) DEFINITION OF TERMS. The term SOFTWARE refers to a computer program stored on a floppy diskette, hard disk drive, magnetic tape, or paper tape that must be loaded into the computer's memory to be executed. The term FIRMWARE refers to a computer program stored in semiconductor memory (ROM, PROM, EPROM, EEPROM, NVRAM, etc.) that is an integral part of the computer's memory. Together, these forms of computer programs are referred to as the "PROGRAM".

3) COPYRIGHT. The PROGRAM(s) and Documentation is owned by InfoSight and is protected by United States copyright laws and by international treaty provisions. The PROGRAM(s) contain trade secrets and proprietary property of InfoSight. You may make one copy of the PROGRAM(s) solely for backup or archival purposes provided that the copy clearly displays the InfoSight copyright notice. Additional copies may be made when authorized to do so in writing by InfoSight. In addition to any other right of InfoSight, InfoSight has the right to terminate this license if the terms of this license are violated.

4) RESTRICTION ON USE AND TRANSFER. The single-processor version(s) of the PROGRAM(s) and Documentation are to be used on one computer or embedded system at any one time. The multi-processor versions(s) of the PROGRAM(s) and Documentation may be used over a network provided that the number of computers accessing the network simultaneously shall not exceed the number authorized by InfoSight or for which you paid the corresponding multi-processor fee. You may not distribute the PROGRAM(s) or Documentation to a third party. You may transfer the license and complete package (retaining nothing) if the transferee agrees to the terms of this License Agreement. Neither the PROGRAM(s) nor the Documentation may be changed or translated without express written permission of InfoSight. You may not reverse engineer, decompile or disassemble the PROGRAM(s).

5) WARRANTY for the subject PROGRAM(s) is covered under the InfoSight Standard Terms and Conditions of Sale.

6) TERM. The license is effective until terminated. It will be terminated if you fail to comply with any term or condition of this License Agreement. You may terminate this License Agreement at any time. In the event of termination, you agree to destroy the PROGRAM(s) and Documentation together with all copies and related materials.

7) YOUR USE OF THIS PROGRAM(S) acknowledges that you have read this License Agreement and agree to its terms. This agreement is complete and supersedes any other agreement that may have related to the subject matter of this agreement.

Introduction

The Logo Designer software provides a WYSIWYG interface to create custom logo images for InfoSight's I-Dent® and InfoDent® line of industrial marker.

Features

The following features are available with the Logo Designer software.

- Compatible with Windows 7, 8 and 10 for enhanced stability and functionality
- Simple point-and-click logo image creation
- Logo size guides make it easy to design for specific font sizes
- Create logos up to 32 pixels high by 64 pixels wide (size may be restricted by marker configuration)
- Interfaces with InfoSight I-Dent® and InfoDent® 8400 markers
- Download logo images directly to the marker
- Upload logo images from the marker for editing

System Requirements

- IBM PC 100% Compatible Computer
- Pentium 2 GHz
- Windows 7, 8 or 10
- 100MB available disk space
- 128MB RAM (256MB recommended)
- Color Monitor (1024x768 resolution or higher recommended)
- Ethernet or serial COM port to connect to marker

Overview

The Logo Designer software is a simple Windows program for creating special logo images specifically designed to be marked by InfoSight industrial marking systems like the I-Dent® and InfoDent® 8400 markers.

Installation & Setup

Installation

InfoSight Logo Designer Software

The Logo Designer software is supplied on CD-ROM. To install the software, simply insert the CD into the PC's drive and close the drive door. The installation program will execute automatically after a few seconds. If the installation program does not start automatically, select Start > Run and enter D:\LogoDesignerSetup.EXE into the field (you may have to substitute the drive letter of your CD-ROM if it is different than D:.) Follow the on-screen instructions to install the software on your PC.

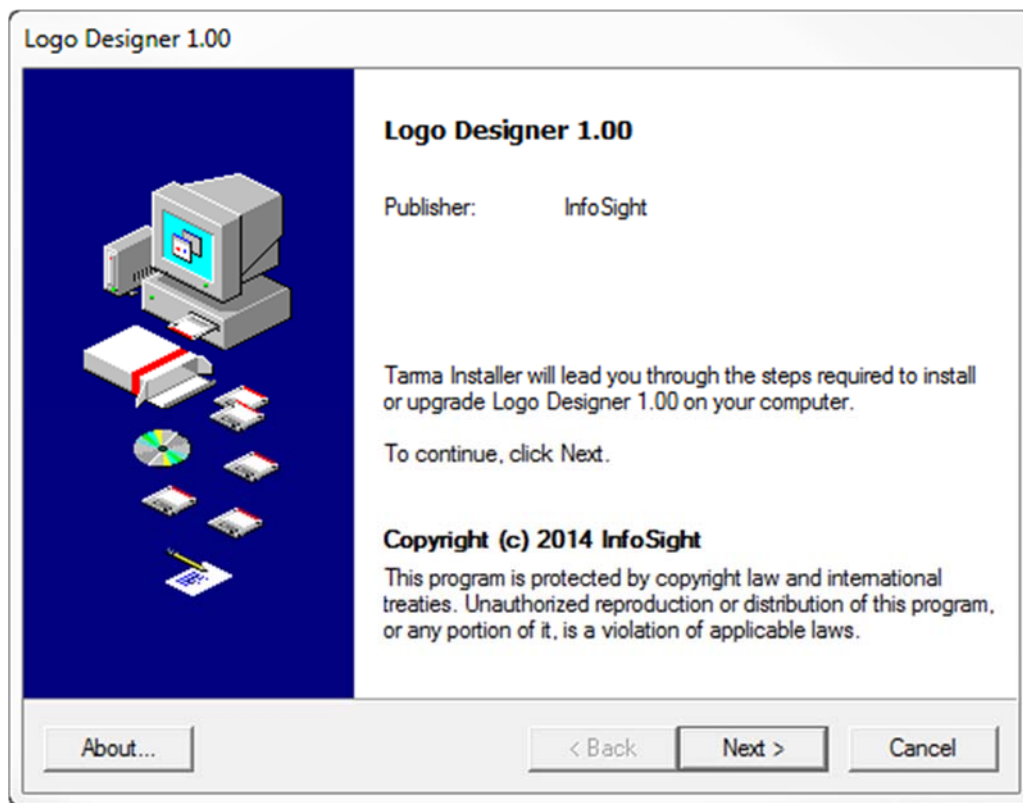


Figure 1

When the installer runs, it shows a screen similar to the one above in Figure 1. Note that the program version number may be different from that shown in the figure. To continue the installation, click the button labeled Next.

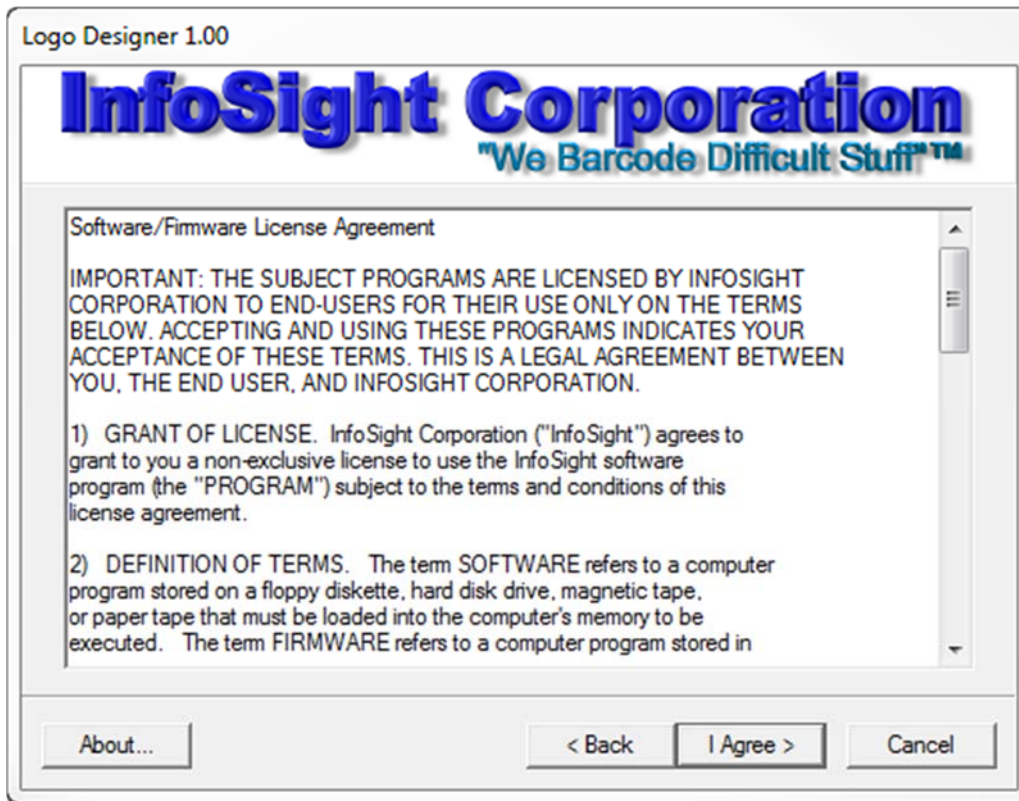


Figure 2

Before you can continue the installation, you must read and agree to the terms of the InfoSight software license agreement. If you agree to the terms, click the "I Agree" button as shown above in Figure 2. If you do not agree to the license's terms, cancel the installation and return the installation CD to InfoSight.

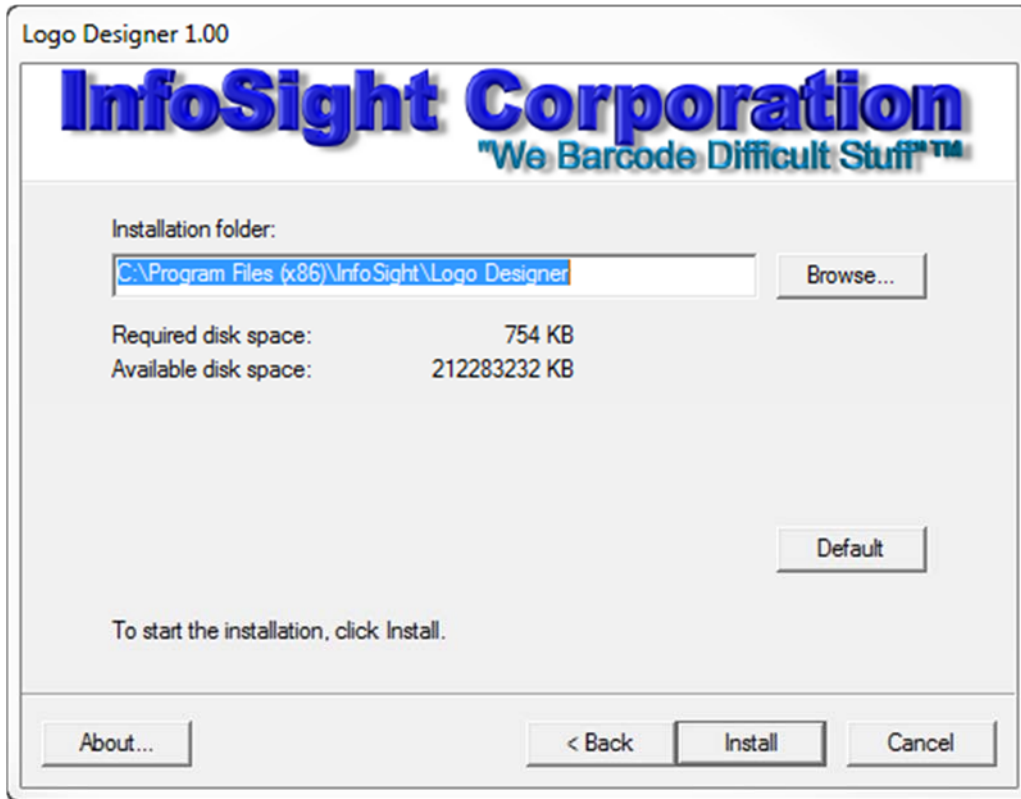


Figure 3

The next step in the installation process shows the installation folder where the installer places the program's files. When you are ready to perform the installation, simply click the Install button.

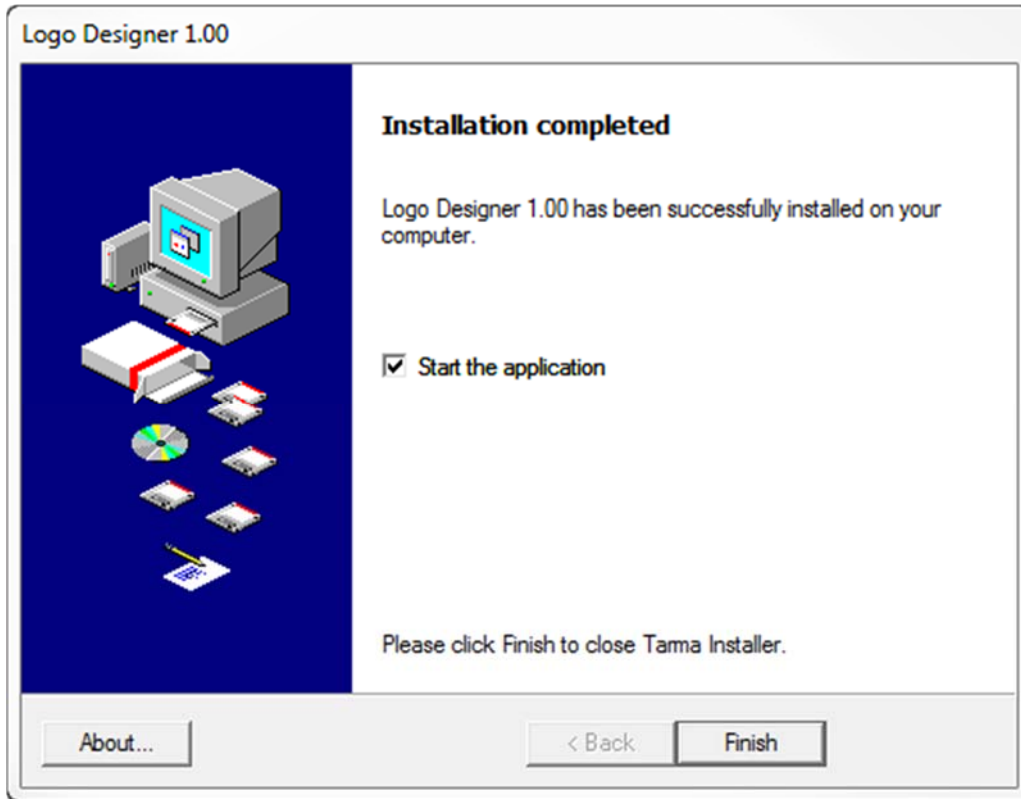


Figure 4

After the installation program has finished copying all of the necessary files to your computer, click the Finish button to complete the installation.

Setup

InfoSight Logo Designer Software

After installing the software, you must configure its settings as needed for the application.

Configure / Preferences – The preferences screen allows you to configure how the program works and how it interfaces to an InfoSight industrial marker.

Please refer to the Configure Menu section for detailed information about the preferences screen.

Main Screen

Operator Interface Screen

Program Startup

When the Logo Designer program first starts, you will see a screen similar to the one shown below in Figure 5.

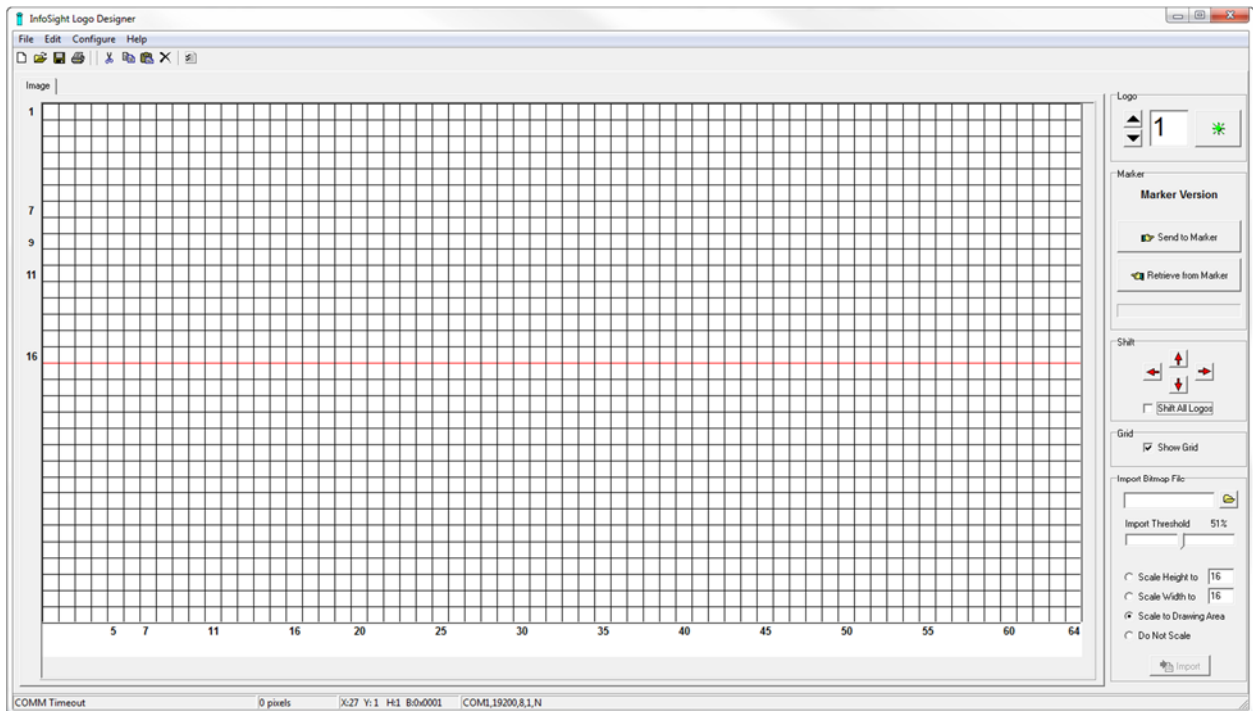


Figure 5

The main form is divided into several sections described below.

Main Menu and Toolbar



Figure 6

The menu provides access to the commands and operations available in the program. The toolbar gives quick access to many of the most often used features.

Drawing Area

The drawing area is where you draw the individual pixels that make up each logo. A grid of 32 x 64 pixels allows you to create logos of whatever size you need for your application. Note that your actual marker's configuration may limit the size of the logos you can use.

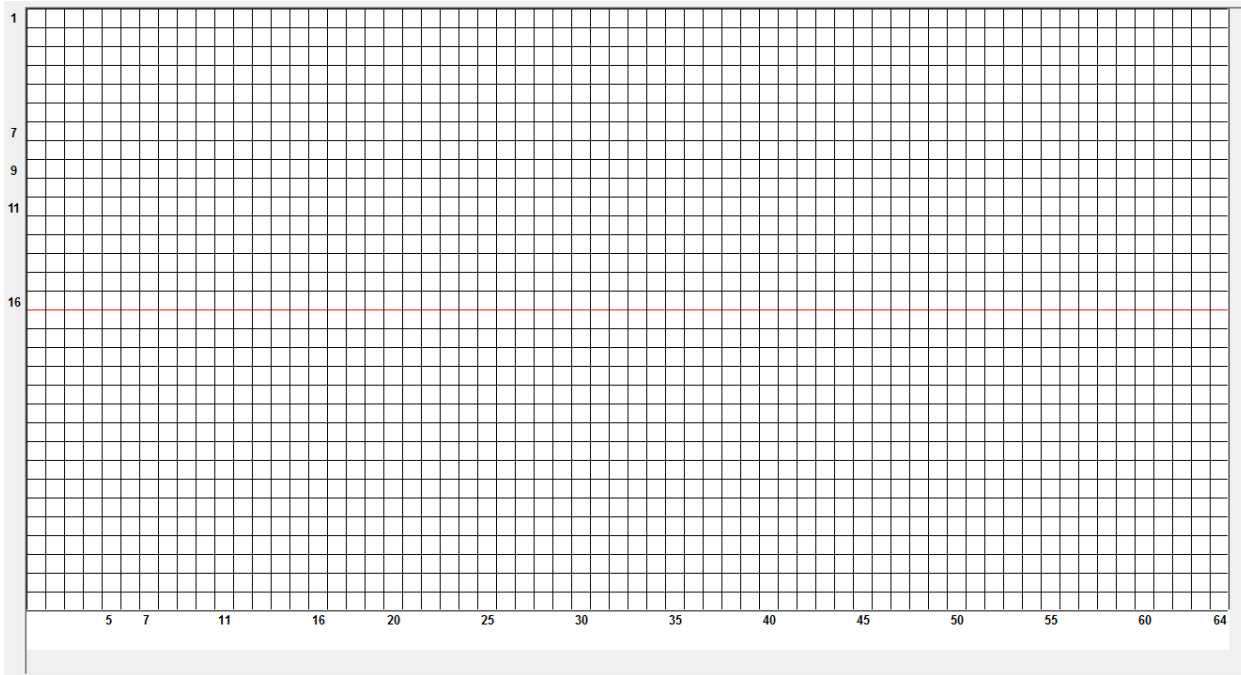


Figure 7

The grid is 32 pixels high and provides row numbers along the left side and column numbers along the bottom. Note that specific row and column numbers are shown corresponding to significant configurations within the marker model. For example, the InfoDent® 8400 stamper supports fonts of 7, 9, 11 and 16 pixels high and these are conveniently labeled on the left edge.

Adding Pixels

To add pixels to your logo, simply click the corresponding grid square with the left mouse button. You can “draw” multiple pixels by holding down the left mouse button and dragging over the desired pixel cells.

Removing Pixels

To remove pixels, click with the right mouse button.

Control Panel

To the right of the drawing grid is a control panel that provides access to specific operations related to logo design.

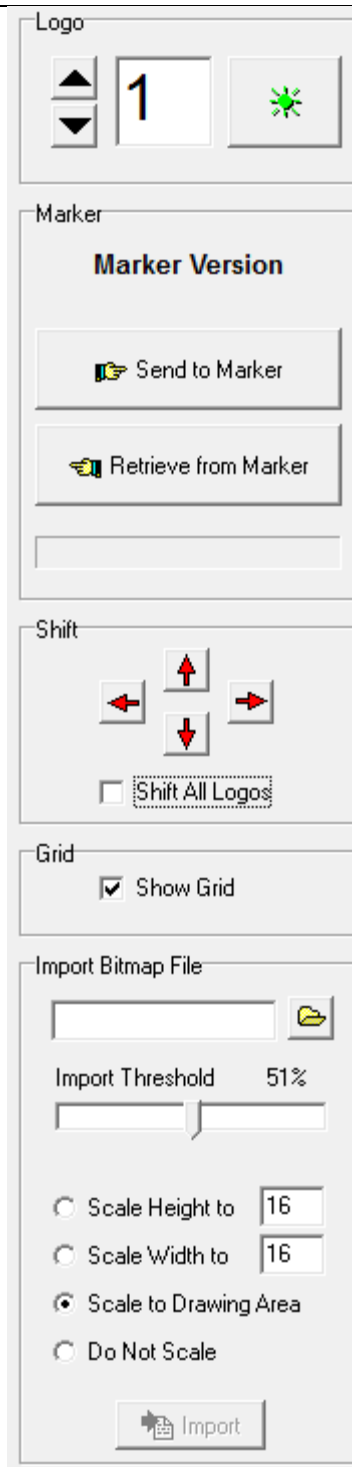


Figure 8

Logo

The logo command group provides a quick way to move from one logo image to another. Use the Up/Down arrow buttons to move from logo ID to another, or enter a specific logo ID and click the Go (green light) button.

Marker

The marker command group allows you to send the current logo designs to the connected InfoSight marker, or to retrieve the existing marker’s logos for easy editing.

Shift

The shift commands allow you to shift the entire logo image up, down, left or right. Each click of an arrow button shifts the image one pixel in the specified direction. A check box allows you to shift all logos at the same time.

Grid

The grid box provides a check box to enable or disable the display of the background grid. Hiding the grid can make it easier to see the resulting logo image.

Import Bitmap File

This group of controls will provide a simple means of recreating a logo image from an existing bitmap file. It can read the bitmap image and scale it to a specific height and/or width. A threshold setting allows you to specify the percentage of pixels in the source image that must be “on” to cause the corresponding logo pixel to turn “on”.

Status Bar

At the very bottom of the display is the status bar. This bar contains several sections that display the current status of the marker communications, number of active or “on” pixels in the logo, X and Y coordinates of the mouse location within the grid, and communications settings.

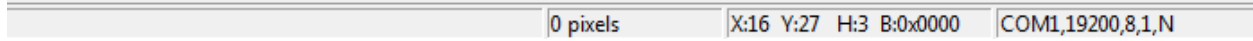
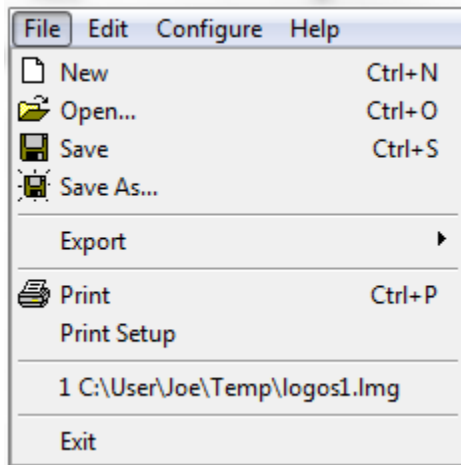


Figure 9

Program Menu

At the top of the Logo Designer program's screen is a menu that allows you to control the program's operation.

File Menu



The file menu provides access to commands that relate to files on the computer. When you create logos for an InfoSight marker, you can save your designs to a file for later editing.

New Menu Item

The File / New menu item completely erases all logo images and clears the file name. If you have not saved your existing logos the program will ask you to confirm your intention to abandon your edits:

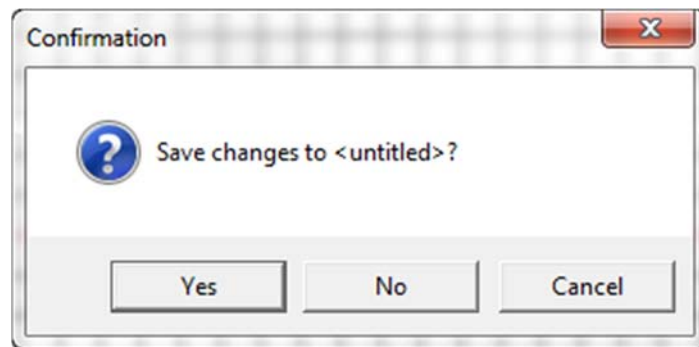


Figure 10

Open Menu Item

The File / Open menu is used to open an existing logo file for editing.

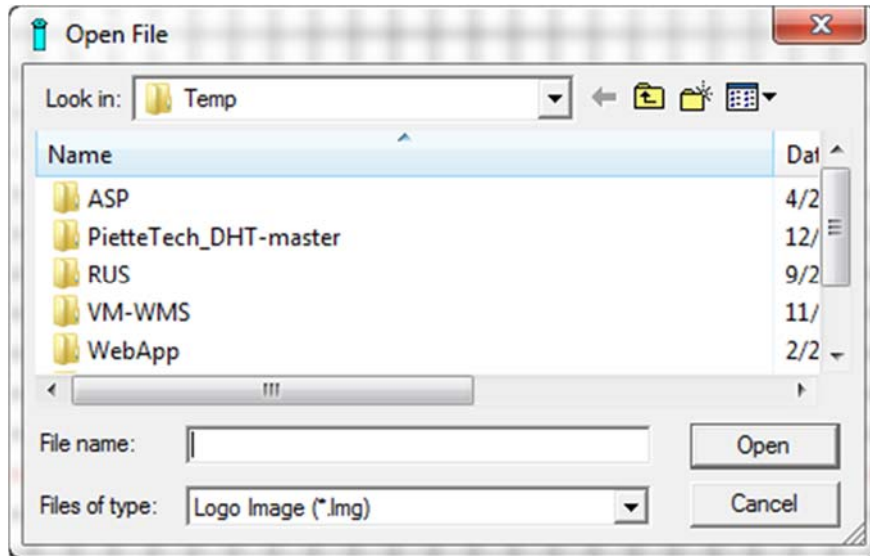


Figure 11

Save / Save As Menu Items

The Save and Save As menu items allow you to save your logo designs to a file. Save is used to save an existing file once it has been named, while Save As allows you to save the file under a new name.

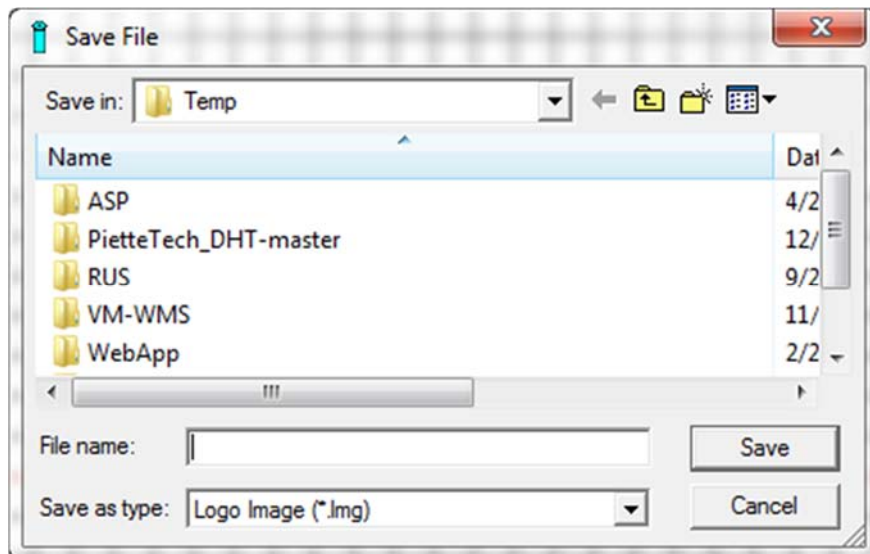


Figure 12

Export Menu Item

The Export menu item is used to save the logo designs in a format that is compatible with the settings file in an InfoSight industrial marker. Two sub-menus allow you to specify the format of the settings file corresponding to the InfoSight markers that are supported.

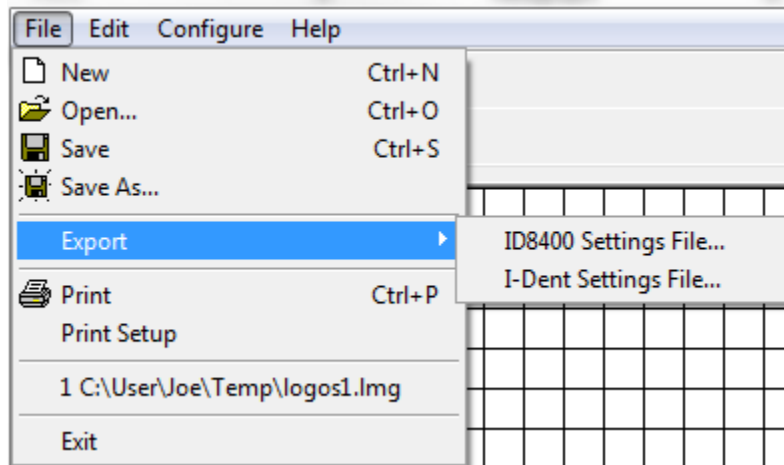


Figure 13

Select either the ID8400 (InfoDent®) or I-Dent® marker format. Once the file is saved to your computer, you can use an FTP program to upload it directly to the marker. Note that the FTP upload method is an alternative to directly uploading the logos from this Logo Designer program.

Print Menu Item

The Print menu item allows you to print your logo design to a connected printer such as a laser printer or ink-jet printer. This can be useful when you want to document your logo designs.

Print Setup Menu Item

The Print Setup menu item allows you to select and configure the printer used to document your logo designs.

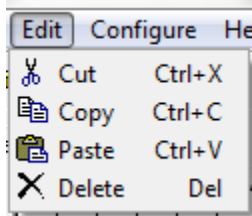
Recent File List Menu Items

The recent file list shows your most recently edited logo files and easily allows you to resume working on a recent file.

Exit Menu Item

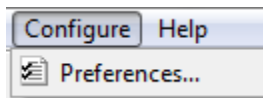
The Exit menu item closes the program.

Edit Menu



The edit menu provides the standard Cut, Copy, Paste and Delete operations. Note that these operations apply to the entire logo image on the screen.

Configure Menu



The configure menu allows you to setup the various aspects of the program's operation.

All settings are stored in the Windows Registry for the current user's account.

Preferences Menu Item

The Setup / Preferences menu item allows you to configure the program's default settings. When you select this option, the Preferences form will appear as shown below:

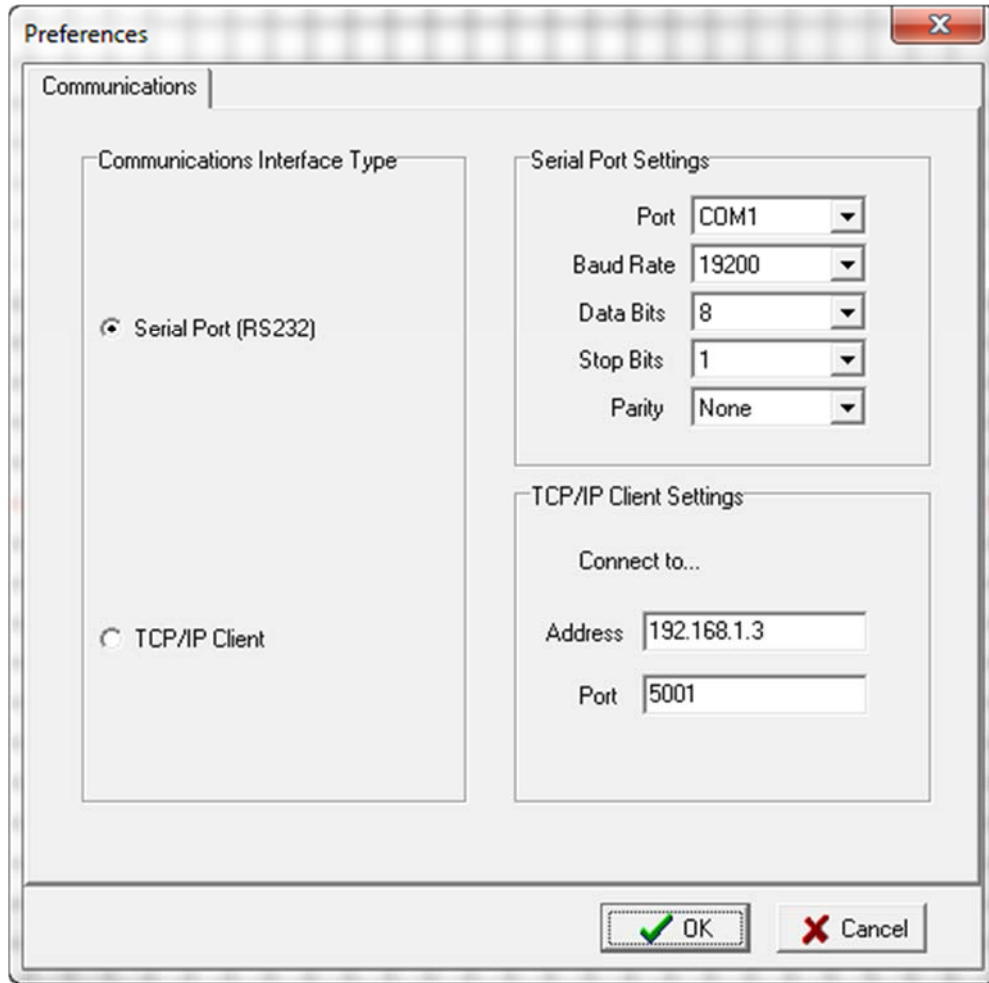


Figure 14

Communications Tab

The communications tab provides the settings for communicating to the InfoSight marker.

Communications Interface Type

Your InfoSight marker can be connected to the PC running the Logo Designer in one of two ways: Serial Port (RS232) or via Ethernet TCP/IP Client. Depending on your selection, you will need to provide the associated settings.

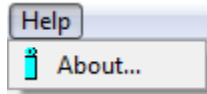
Serial Port Settings

Specify the serial port communications settings for Port name, Baud Rate, Data Bits, Stop Bits and Parity. These settings must exactly match the configuration of the serial port in the InfoSight marker.

TCP/IP Client Settings

Specify the IP address assigned to the InfoSight marker, and the TCP port number to which it is listening. These settings must exactly match the marker's configuration.

Help Menu



The help menu provides helpful information to the program's operator and/or supervisor.

About Menu Item

The Help / About menu item will display the program's About box as shown below.



Figure 15

The About box provides information about the program such as its Job and Version numbers. This information may be requested by InfoSight engineering personnel to aid in diagnosing problems with the software. Information is also provided on how to contact technical support.

Conclusion

In Conclusion

This concludes the Software Reference Manual for InfoSight Logo Designer.

Customer Service

How to reach customer service:

Phone Support	InfoSight Corporation Customer Service offers free phone support to answer questions during normal non-holiday working hours, Monday through Friday 8am to 5pm Eastern time (New York, USA). Call 1-888-642-3600, or outside the USA call 740-642-3600.
Emergency Service	After regular business hours, call 740-642-4666.
On-Site Service	InfoSight Corporation can dispatch a Field Service Engineer to your facility to perform equipment start-up, repair, maintenance, and training.
Service Contracts	Periodic scheduled on-site maintenance, technical service and extended warranties can be arranged by contacting Customer Service at the number below.
Factory Service	Call Customer Service for a Return Authorization Number before returning equipment to our factory for repair and/or major maintenance.

For more information regarding any of these services, call 888-642-3600 (outside the USA call 740-642-3600) and ask for Customer Service.

Or, visit us on the worldwide web at www.infosight.com