

InfoSight Custom Solutions

Tubes & Pipes

InfoSight designs and builds customized automated marking machines that:

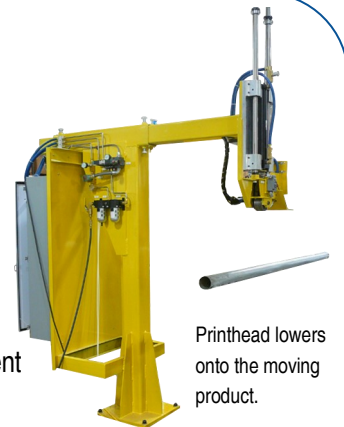
- Fit within customer's existing operations.
- Operate at temperatures from ambient to approximately 2000°F (1090°C).
- Mark stationary or moving products.
- Are configured to best serve the application: gantry, jib, robot, stand alone.

Marking Technology Recommendations	Hot Tubes & Pipes	Cold Tubes and Pipes
I-Dent®	✓	
Drop on Demand (DOD)		✓
InfoDent® 8400 Stamping	✓	✓
Labelase® Direct Laser Marking	✓	✓

InfoSight Jib Markers



- For Moving Product (Right).
- For Stationary Product (Left).
- Ideal dot-matrix marking solution for high contrast marking on pipes and tubes.
- Various marking technologies available to best match application requirements.
- Wide variety of inks and paints developed to handle ambient or high temperature, as well as oily surface conditions.
- Generally used for O.D. marking.



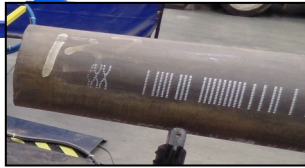
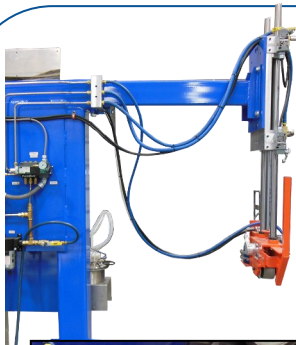
Robotic Markers

- Provides faster cycle times with a smaller footprint in the customer's plant.
- The marking functions available: InfoDent® 8400 Stampers, Automatic Stencil Markers such as DOD and I-Dent® Stenciling Systems, and Labelase® Direct Laser Marking Systems.
- Marking heads are incorporated as the End Of Arm Tool (EOAT) on commercially available robots.
- Utilize InfoSight marking software, PLC control software, and the Robot software to create a marking system that integrates seamlessly into the customer's process.
- Suitable for I.D. or O.D. marking.



InfoSight Custom Solutions

Tubes & Pipes



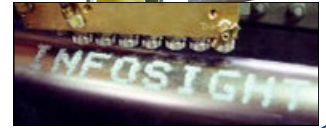
Automatic Stencil Marking Systems offer practical and cost effective alternatives to manual stenciling.

I-Dent® Marking Systems (Right)

- Utilize a non-contact multi-nozzle printhead, capable of producing a full range of upper case alphanumeric characters 3/4 to 6 inches (19 to 150 mm) high.
- Recommended for high temperature (>500°F, 260°C) applications.

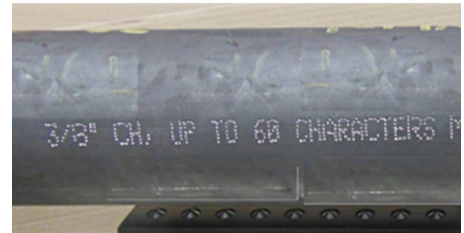
DOD systems (Left)

- Offer the same flexibility with an economical OEM printhead
- Recommended for ambient temperatures.



The **InfoDent® 8400** marking system is a programmable heavy duty stamping system. Developed over 40 years ago, these systems can be found in mills all over the world.

- Originally designed specifically for hot or cold marking applications where reliable operation under severe conditions is a requirement.
- Marks permanent, easy to read dot matrix characters using rapid fire, pneumatically-driven, conical tipped impact pins.
- Marks legibly on scaly surfaces and on rough, curved, or uneven surfaces.
- Mounted as stationary stampers or on jibs, gantries, or robots to mark moving or fixed products.



Customized InfoSight **LabelLase® Laser Marking Systems** print barcodes directly onto Steel Products.

- Applies a white patch that is marked by the laser.
- Temperature range: ambient to 500°F (260°C), but may be modified for higher temperature products.
- Message can include any combination of barcodes, alphanumeric characters, and logos.

